

\$2 donation

Langlade County Forestry Department
 1633 Nava Road • Antigo, Wisconsin 54409
 Phone 715.627.6300 Fax 715.627.6276
 www.langladecounty.org/tourism



ATV
State Maps

2021-2022

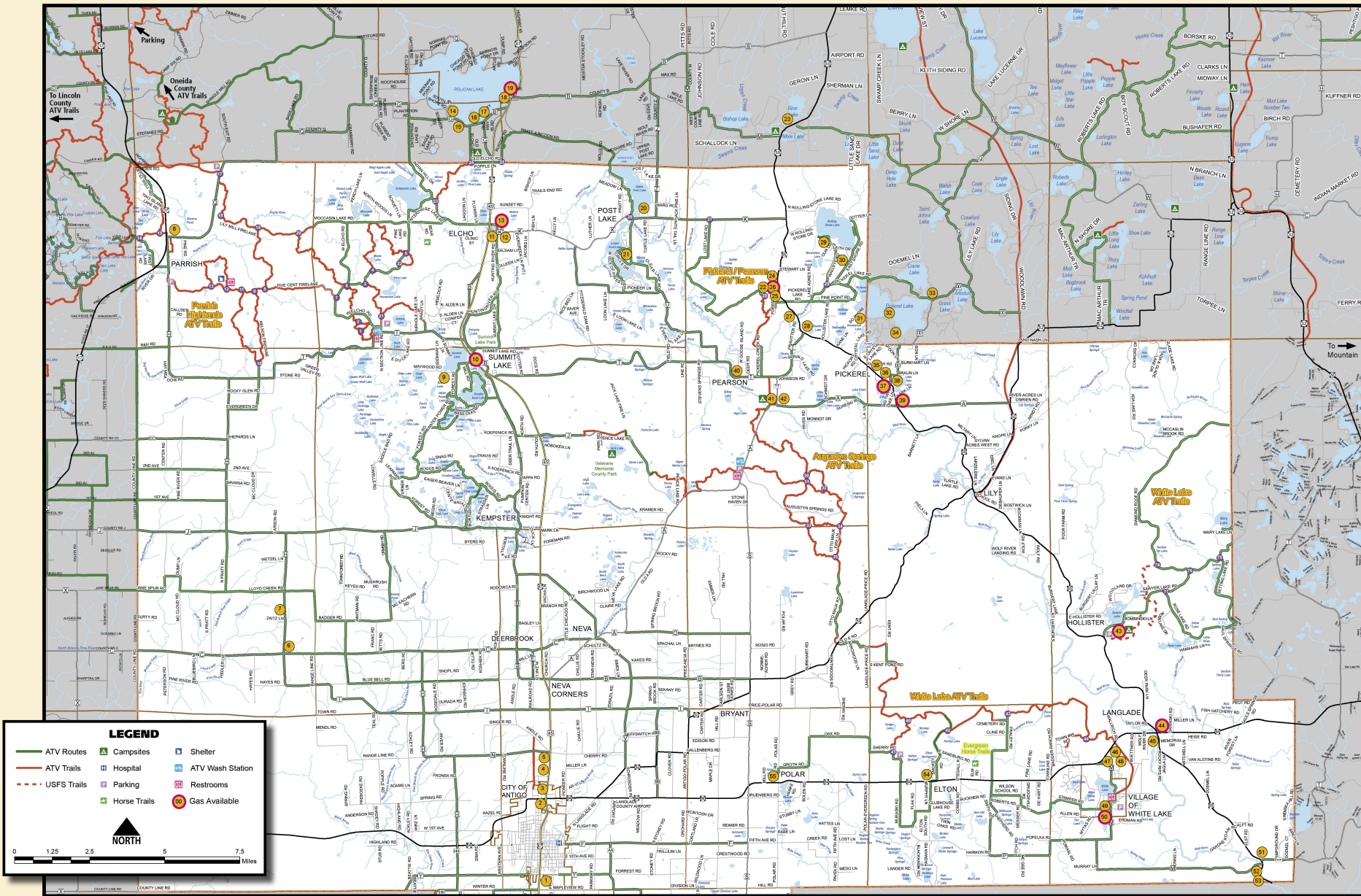
WISCONSIN
Langlade County

WELCOME TO
Langlade County
 THE COUNTY OF TRAILS



These maps are provided to you through the cooperative efforts of the Langlade County Forestry and Recreation Department, Parrish Highlanders ATV Club, Wolf River Riders ATV Club and White Lake ATV Club. Your ATV registration fees have enabled Langlade County to develop and maintain these trails. If you encounter a trail hazard, please report it to the Langlade County Forestry and Recreation Department at (715) 627-6300.

PLEASE CONTACT THE
 Langlade County Sheriff's Department
 for emergencies at
 (715) 627-6411 or Dial 911



WELCOME TO THE LANGLADE COUNTY ATV/UTV TRAIL SYSTEM!

These trails are located mostly on land owned and managed by Langlade County. Trails were developed and are maintained by Langlade County with the exception of private property which is maintained by local clubs. There are over 100 miles of trail connected by several routes. The trail is very scenic and traverses glacial moraines, upland hardwoods, cedar swamps and small rivers and lakes. The terrain is slightly rolling to very hilly, and links to the Lincoln, Oneida and Forest County ATV trails. The trails are open May 1, weather permitting, and close December 1.

TRAIL ACCESS

- There are six major parking areas:
- Parrish Highland Trail area** - Hwy Q, at the Oneida/Langlade County Line Hwy 2, miles south of Hwy's 17 and Q
 - Hwy 1, 3 miles west of Hwy 45, Summit Lake**
 - Augustyn Springs Trail area** - Hwy A, 8 miles northeast of Nevada from Hwy 45
 - White Lake Trail area** - Sherry Rd, 1.25 miles north of Hwy 64, Polar - Hwy M/Maple St., Downtown White Lake

TRAIL REGULATIONS

The Langlade County ATV trail system is a two-way trail. It is located on existing logging roads which are open to motor vehicle traffic, licensed vehicles and many other recreationalists. Off trail riding is strictly prohibited; this includes any forest road that is gated, cabled, posted, ditched or signed prohibiting the travel of unauthorized motor vehicles. Side-by-side vehicles or UTVs and LUVs are allowed on Langlade County Trails and forest roads. ATVs with studded tires, chains or tracks, are prohibited. Also, ATVs are not allowed on the Ice Age Hiking Trail. The Ice Age Trail can be recognized by yellow paint on the trees adjacent to the trail. The ATV trails are marked by orange-trailblazers/brown ATV signs. Please use caution and appropriate speed.

ROADS

All county trunk highways within the unincorporated areas of Langlade County are designated as ATV routes, except all or portions of Hwy A, Hwy S, Hwy TT, Hwy K, Hwy H and Hwy Y. A listing of county highways not designated as routes is posted on the County's website. The town road routes illustrated on this map are accurate as of print date. Additional routes may be open, contact the local town(s) for designated routes.

CAMPING

Camping on the Langlade County Forest is allowed for up to 14 days, except in parking areas and areas posted prohibiting it. There are also several campgrounds, resorts and motels throughout Langlade County.

SERVICES

Food and gas stops are available along the trail, on connecting routes and in the Antigo Town road system. Please see the sponsors for available services and the map side for their location.

TIMBER HARVESTING

The Langlade County Forest is over 129,000 acres in size and is managed primarily for timber production, together with providing recreational wildlife and other multiple use benefits. You may encounter some logging activity. Please use caution and respect the loggers' equipment as they earn their livelihood.

INVASIVE SPECIES

Please assist us in slowing the spread of invasive species on the forest by washing your machines before and after riding on Langlade County's ATV Trails. There are washing stations located at the Hwy T and Augustyn Springs parking areas.

Please respect the forest. Don't litter or harass wildlife. We hope you enjoy what Langlade County has to offer, and that you'll have a memorable riding experience!

YAMAHA POLARIS. Simplicity

ANTIGO YAMAHA
 919 S. Superior Street • Antigo, Wisconsin
 1-715-623-4144 • 1-888-261-4791 • Fax: 715-627-2045
 www.antigoyamaha.net

www.super8.com/antigo

Super 8 - Antigo 715-623-4188
 535 Century Ave. Antigo, WI. Toll Free Reservations: 1-800-800-8000

Fuller Sales & Service, LLC
 Your Professional Outdoor Power Equipment Headquarters
715-623-4912 • Antigo, WI • www.fullers.com

VERNE'S OF ANTIGO
 Suzuki • Honda • Kawasaki
715-623-2378
 N2804 Hwy 45 • Antigo, WI 54409
 www.vernesinc.com

RICK'S ROADHOUSE
45
 Happy Hour 3-6pm Mon-Fri
 Best BLOODY MARYS in the Northwoods!
 ONE MILE NORTH OF ANTIGO, WI ON US HWY 45

Held's Bar - "Your friendly corner bar!"
 Open Sat & Sun 11 - close
 Tues - Fri. 3 - close • Mondays - seasonal
Bar • Grill • Pizzeria
 Located on ATV & Snowmobile Trails
 Follow us on Facebook
 Located on the corners of T, J, & C in Deerbrook

GREAT NORTHERN CAMPERS
 N1648 County Road H • Oneida, WI 54455
 greaterthanmostcampers@gmail.com | gntnort.com
 715-623-4466 (2557)

FISHER'S BAR
 Corner of Hwy's H, Q & L
9 a.m. - Close Tuesday - Sunday
 Closed Monday
Trailer Parking Available
 Pizza, Burgers, Chicken Sandwiches & Refreshments
Phone: 715-873-4561

Sammy's Bar & Grill
 N9076 Water Power Road • Deerpark, WI 54424
715-275-4230
 Open 4pm Wed-Sun • Closed Mon/Tues
 Serving Full Menu
 Friday Fish Fry
 minutes off Hwy 45 on ATV route

SUMMIT LAKE GAS-N-GO
 Made Fresh Daily
 Fresh Bakery • Deli • Pizza • Subs
bp
 Also Have:
 24 Hr. Gas • Snowmobile Oil • Plugs
 Live Bait • Beer • Liquor
275-3830
 N5211 Hwy 45 • Summit Lake

COZY COTTAGE CAFE & DINETS
 Omelets
 Skillet Burgers & Fries
 Friday Fish Fry
 Downtown Elcho • N11204 Antigo St • 715-275-8006
 CHECK US OUT ON FACEBOOK

Elcho Clubhouse & Restaurant
 Open 9:00am • Closed Tues-Wed
 Friday Night Fish Fry, Burgers & Homemade Pizza
(715) 275-3800
Elcho Wash Sloss Laundromat
 Open 9:00am • Closed Tues-Wed
(715) 275-3800

Wagner Elcho
 24 Hour Pump-Gas-Beer
 Free ATM
 Hwy 45 & K 715-273-8622

GERRIT'S Lakeview
 on Pelican Lake
 Large Groups Welcome
 Daily & Nightly Specials
 656 County Hwy Q, Pelican Lake, WI 54463
 OPEN 7 DAYS A WEEK

Christian's Campground Inc.
 Hot Showers & Clean Restrooms
 Family or Group Camping with 50 Sites
 Right on the ATV Trail!
715-490-1900
 472 Eagle Lake Road • Pelican Lake, WI 54463
 Mike & Tammi Christian

ROADSIDE PUB
 Open 7 days a week
 526 County Hwy G, Pelican Lake
 Drinks • Pizza • Burgers
 Accessible by Snowmobile & ATV
(715) 487-5554

Boiling Springs
 Closed Mondays - Open Daily at 11 a.m.
 New Owners - Jim & Tina Peerenboom
 479 Hwy G, Pelican Lake, WI 54463 (715) 487-5534

TRAIL INN Tavern & Motel
 Ray & Robin Stolarik
 717 Hwy 45 S
 P.O. Box 43
 Pelican Lake, WI 54463
 1-715-487-8280

bp MUSKY MART Convenience Store
 Gas • Oil • Hook • Beer • Liquor • Groceries
 24 HOUR DAY AT THE PUMP
 Wade Novak
 (715) 487-4033
 Fax: (715) 487-4098
 Pelican Lake, WI 54463

SUNSET VIEW
 Lakeside Resort & Tavern
 Family fun, lakeside cabin resort on beautiful Upper Post Lake
 Full Service Bar Open 7 days a week • Locally Made Pizza • ATM
 sunsetviewpostlake.com • 715-275-3906 • f

TWIN OAKS RESORT
 Tom Seib, owner
 Cottage Rental • Bar & Pizza • Beach & Boats
 N10670 Circle Drive, Elcho, WI 54428
 On Beautiful Post Lake
715-275-4395
 Open Wed-Fri at 3pm • Sat-Sun at Noon • Closed Mon-Tues

JANSEN'S SEPTIC
 PUMPING & INSPECTION
 CLEANING & THAWING
 FULLY INSURED & LICENSED
 JEROME JANSEN
 715-464-4605
 715-610-0380
 WE TAKE CRAP-FROM ANYBODY
 715-478-3200

MOLE LAKE
 3084 Hwy 55 • Grandon, WI 54620
 (North of Mole Lake)
MOTOR SPORTS MARINE, LLC
 Sales & Service - New & Used
 Recreational Rentals
 Fishing Boats
 N10306 State Road 55, Pearson, WI 54462 • 715-484-2106
 www.motorboatrentline.com
 OPEN: Mon-Thurs 9-5, Friday 9-6, Sat 9-3
 Closed on Mondays September 15 - April 15

SCHROEDER'S AUTO SALES & SERVICE
 Adam Schroeder
715-484-4131
 schroedersauto@gmail.com
 Mobile RV Service • A/C Service • 24 Hour Towing
 Imports & Domestic • Alignment • Tires
 N10302 State Hwy. 55 Pearson, WI 54462

Spencer's
 GAS • GROCERIES
 BEER • LIQUOR • BAIT
 TICKETS • LOTTERY
 DNR LICENSES • ATM
 Mon-Thru 6am - 8pm
 Fri-Sat 6am - 9pm
 Sun 6am - 7pm

Country Store
 GAS • LIQUOR • BAIT
 TICKETS • LOTTERY
 DNR LICENSES • ATM
 Mon-Thru 6am - 8pm
 Fri-Sat 6am - 9pm
 Sun 6am - 7pm

BAILEY'S SERVICES
 Back Hoe, Skid Steer & Cat Work
 Log Clearing, Driveways,
 Lawns, Woodchipping,
 Digging & more
 Steve Bailey - Pearson, WI 715-484-8917

LONGHOLTS
 Longshots Tavern & Trailside Inn
 715-484-3045
 N9981 St. Hwy 55
 Pearson, WI 54462
 trailsideinn17@gmail.com
 Follow us on Facebook @
 trailsideinn&longshotsbar
 Year Round Lodging • Full Restaurant / Bar

NEW COTTAGES • BAIT • CAMPING • FOOD • LIQUOR
 SNOWMOBILING • HOME OF THE PINE TUNNEL TRAIL
Walleye Lodge
 N1159 WALLEYE ROAD
 PHONE: 715-484-3333 PEARSON, WI 54462

Northern Hideaway
 RV PARK & CAMPGROUND
 BONNIE JACOBSEN
 N10692 E. Shore Rd., Pearson, WI 54462
 Phone 715-484-3373 Cell 715-610-1495
 WE OFFER: Showers, Laundry, Sunday Dinner, Walking Trails,
 Water & Electric Hook-up, Pull-throughs, Boat Parking & a Pavilion
 Rent Daily, Weekly, Monthly or Ask for Season Rates

PICKEREL BUNKHOUSE
 LODGING FOR ALL YOUR NORTHWOODS ACTIVITIES
 9495 South Shore Dr
 Pickerel, WI 54465
 pickerelbunkhouse@aol.com
 Located directly on
 ATV Snowmobile Routes
 V8RD PROPERTY C 2300111
 Cabin Rentals • Sandy Beach • Bar & Grill with Beautiful Lake View

PICKEREL POINT RESORT
 TOM & VAL STRYZY
 Pickerel Point Resort Bar & Grill
 715-484-2929 Business
 715-827-9386 Vols Cell
 580 First Ridge Lane
 Heaenau, WI 54465
Jerry Schuh's SPORTSMEN'S LODGE
 BAR • PIZZA • BAIT
 BOATS • CABINS • MINIATURE GOLF
 8915 PICKEREL LAKE ROAD
 PICKEREL, WI 54465
(715) 484-2703

Dei's Northern Frontline
 Supported
 Fri & Sat 4pm to close
 Sun 11:30am to 4pm
 Monday - Wing Night 6p - 12pm to close
715-484-4212

CHARLES JACKSON
 TRUCKING & EXCAVATING LLC
 PROCESSOR OF: FRACTURED ROCK • NATURAL ROCK
 TOP DIRT • GRAVEL • FILL
 P.O. BOX 114
 PICKEREL, WI 54465 PHONE: 715-484-2911

VICTORS COUNTRY STORE
 N9948 STATE HIGHWAY 55
 PICKEREL, WI 54465
 Amish Baked Foods • Snacks
 Old Fashioned Candy • Ice Cream
 Made in Wisconsin Home
 V8RD Rental Updates
 FOLLOW US ON FACEBOOK
 PHONE: 715-484-2911

Lotter's ONE STOP SHOP
 Gas/Diesel LP Groceries Meats Produce Beer/Liquor
 WE ALSO OFFER
 ATM OVER THE COUNTER FIRE PERMITS
 FISHING & HUNTING LICENSES BAIT TACKLE
 N9184 State Hwy 55 & DD • Pickerel
715-484-7932

OUR HAPPY PLACE
 Open 7 days a week 11am until close
 Casual, friendly atmosphere
715-850-1113
 Darts
 Pool
 Horseshoes
 ATM

Country Inn
 IT'S FUN HERE!
 Serving breakfast, lunch & dinner Tues thru Sun
 CLOSED MON
 Bloody Marys Bar Saturday & Sunday
715-484-3121
 David Blitzer - Owner
 N9195 Hwy 55
 Pickerel, WI 54465
 countryinnpickel.com
 FIND US ON FACEBOOK

NORTHWOODS CAMPING
 Breakfast
 Lunch
 Dinner
 Open Daily 7am
 Closed Tuesdays
 northwoodsinnpickel.com
 Campsites Available • Outdoor Toilet • Tiki Bar • Ideal for Weddings & Parties
 Concrete Level Camp • 2 Acre Outdoor Area • Located on ATV Trail & ATM
 Convenience Store • 24-Hr. Fishing
715-484-3522

RIVERSIDE PUB
 BRIAN & DIANNA
MUSIC • FOOD • SPIRITS
 ON THE SCENIC WOLF RIVER
254-449-6156
 MON 3PM TO CLOSE
 SAT & SUN 12PM TO CLOSE

Lil Hammer's Hideaway
 Bar / Grill & Campground
 Full Grill Menu & Homemade Pizza
 Gas & Trailer Parking for ATV's available as well
 Friday Night Fish Fry • Like us on Facebook
 OPEN DAILY AT 10 A.M.
 715-484-4413 Larry & Karen Schisel
 lilhammershideaway.com

FJS CUSTOMS
 Hunting, fishing, canoeing, or rafting on the Wolf River
 Horse, ATV, snowmobile, hiking & bike trails
One Mile All Sport Resort
 Lovell Jung - Owner
 N5751 Hwy 55, White Lake, WI 54491 (north of Langlade)
715-610-2579 or 715-484-8908
 Gas Pumps • Cabin Rentals • New Servicing Food
 Permanent camps available - full hookups, showers & laundry

MIKE'S SERVICE at LANGLADE
 Seasonal Sporting Goods • Convenience Store
 Gas Diesel • Bait & Tackle • Licenses
Fly Shop - Need a special pattern?
 Ask Mike - Custom Tied Flies
 Hwy 55 & 64 • Langlade
 Open Tues to 5pm
715-882-8901
 We Have Non-Ethanol Gas
 FLY SHOP AUTO REPAIR

The Wolf Pass Bar & Grill
 Head 'em off at the Pass!
HOT FOOD • GOLD DRINKS
 Thu-Mon 12pm to close • Wed 3pm to close • Closed Tues
 Hwy 55 Langlade on Main Trail
715-882-4172

THE ELTON MALL & OUTDOOR CAFE
 Hwy 64, Elton • ON THE TRAILS! • 715-882-3981
 Groceries, Automotive, Gift Items, Specialty Candles, Cold Beer Soda,
 Liquor, Tobacco, Snacks, Pizza, Hot & Cold Sandwiches,
 Subs & Burgers, Ice, Bait & Tackle, Sport, ATV,
 Ice Cream, Lottery, DNR License, Firewood
 ATV/Snowmobile Trailer Parking
 Mon-Sat 7:30am-5pm
 Sun 8-11:30am
 WINTER HOURS WILL VARY

TIMBER HAVEN BAR & GRILL
 We62 Hwy 64 • Polar
 Closed Mon & Tues
715-623-7662

WOLF RIVER RECOVERY & TOWING
 715-473-AUTO (2886)
 Wolf's Struck Hwy 64
 Ulberts Lake, WI 54461
 Jeff Blawat - Owner
 wolfscars@yahoo.com
 For all your hauling & towing needs

GATOR'S ROCKIN' COUNTRY TAVERN
 Friendly Gator Hospitality!
 Homemade Pizza on Weekends • Beer • Liquor
 Hwy M, White Lake, WI • 715-882-2722
 Open Thursday, Friday, Saturday at 3 pm

Black Bear Food & Spirits
 Open 11 a.m. Tues - Fri., Closed Mon
 Hot Food & Family Seating
 Broasted Chicken Daily
 Fish Fry Friday
"ON THE TRAIL"
 www.blackbearfoodandspirits.weeb.com
 621 Bissell St.
 White Lake, WI 54481
 (715) 822-5321

White Lake Market
 633 Bissell St. - (715) 882-8419
 Deli • Fresh Subs • Bag Lunches To Go
 Pizza • Bakery • Beer & Liquor • ATM
 24 Hour Gas • No Ethanol • In-Store Seating
"ON THE TRAIL"

River Forest Campground & Rafting
 Rafting & Camping
 1000 Twp. W. Hwy 55, White Lake, WI (17th 20th 90th)
 Weekend • Closure Area Available • Boat Rental
 Contact: 715-882-3144 • Cell: 715-882-3144
 Contact: 715-610-0810 • info@riverforest.com

RIVER HAVEN ON THE WOLF
 RESTAURANT, BEVERAGE & MOTOR CRAFTS
 NEXT TO GRAB N JACKS
 LOCATED ON ATV TRAIL
 SLEEPER'S PEOPLE
 Cell: 928-305-4191
 www.wolfriverhaven.com
 Email: callie@wolfriverhaven.com

CRAB JACKS
 Restaurant & Bar
 serving breakfast,
 lunch & dinner
 Scenic overlook of Wolf River
 LODGING • RAFTING • ZIP LINING
 N2680 Hwy 55, White Lake
 715-882-8811 • crabjacks.com

TIMBER HAVEN BAR & GRILL
 We62 Hwy 64 • Polar
 Closed Mon & Tues
715-623-7662

TIMBER HAVEN BAR & GRILL
 We62 Hwy 64 • Polar
 Closed Mon & Tues
715-623-7662