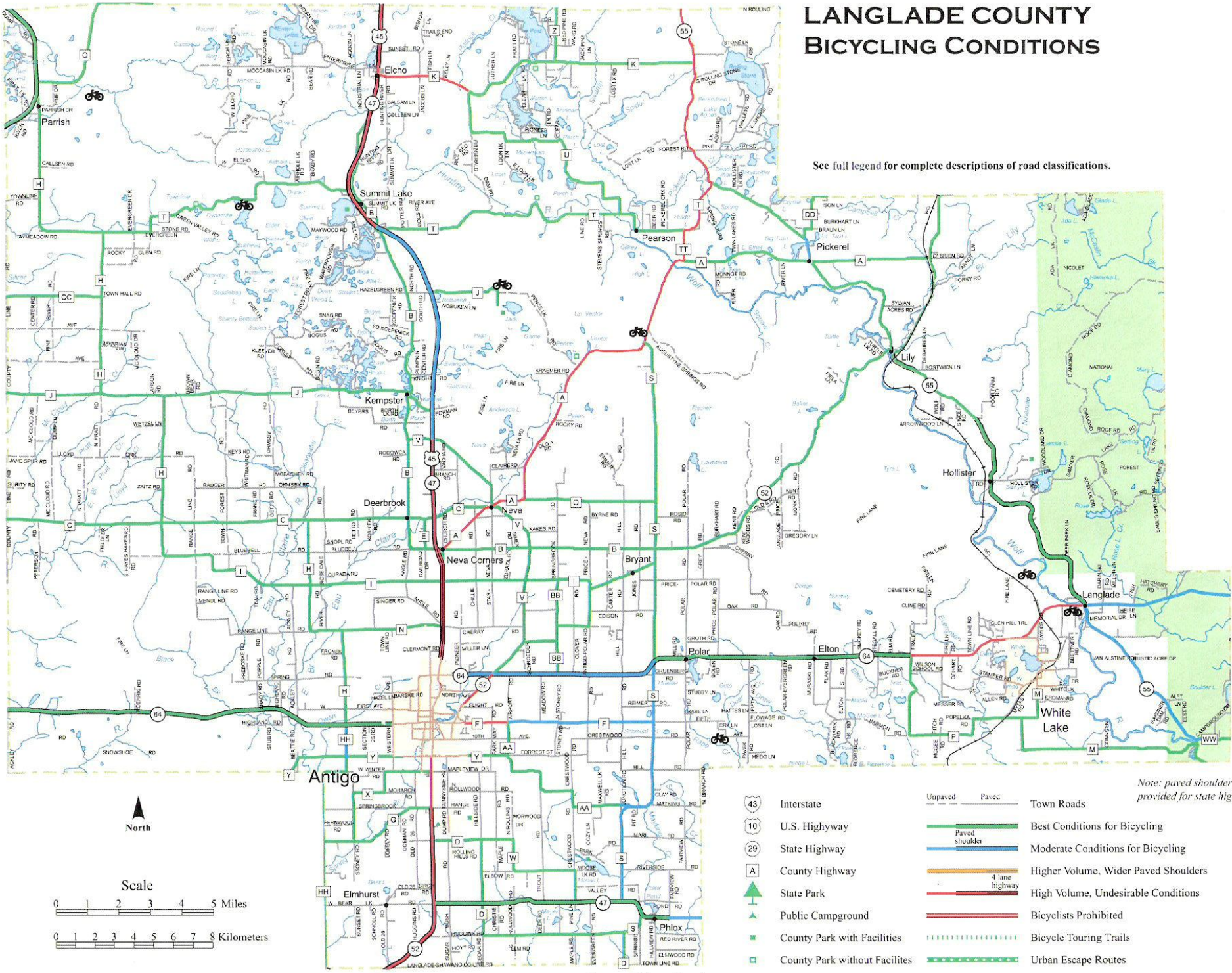


# LANGLADE COUNTY BICYCLING CONDITIONS

See full legend for complete descriptions of road classifications.



Scale

0 1 2 3 4 5 Miles

0 1 2 3 4 5 6 7 8 Kilometers

- |  |                                |  |         |  |       |  |                                      |
|--|--------------------------------|--|---------|--|-------|--|--------------------------------------|
|  | Interstate                     |  | Unpaved |  | Paved |  | Town Roads                           |
|  | U.S. Highway                   |  |         |  |       |  | Best Conditions for Bicycling        |
|  | State Highway                  |  |         |  |       |  | Moderate Conditions for Bicycling    |
|  | County Highway                 |  |         |  |       |  | Higher Volume, Wider Paved Shoulders |
|  | State Park                     |  |         |  |       |  | High Volume, Undesirable Conditions  |
|  | Public Campground              |  |         |  |       |  | Bicyclists Prohibited                |
|  | County Park with Facilities    |  |         |  |       |  | Bicycle Touring Trails               |
|  | County Park without Facilities |  |         |  |       |  | Urban Escape Routes                  |
|  | Wayside                        |  |         |  |       |  | Major Urban Streets                  |
|  | Highway Interchange            |  |         |  |       |  | Town Road with Higher Traffic Volume |
|  | Bridge                         |  |         |  |       |  |                                      |
|  | Mountain Bike Trail            |  |         |  |       |  |                                      |

Note: paved shoulder information is provided for state highways only.